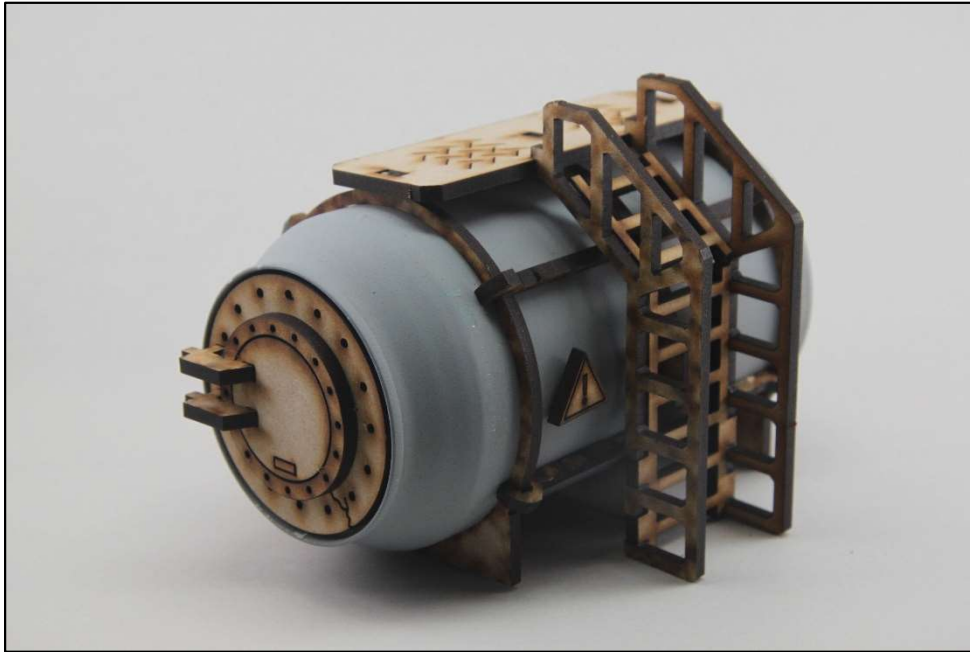




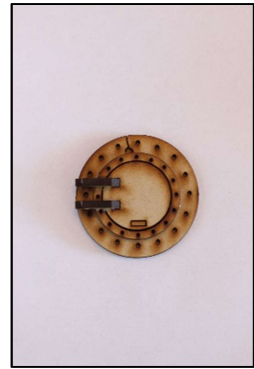
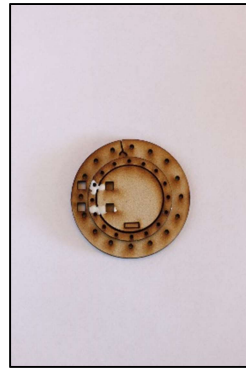
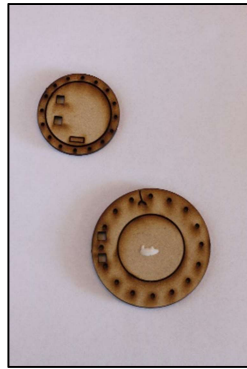
Horizontal Chem Tank Kit

Use the picture to guide assembly. A few things to note:

1. Start with the biggest rings, which will slide onto the can. There are two sets of three rings on the sprue – find two smooth rings, and one with the extra tab. The tab attaches to the ladder, so it goes in the middle.



2. When placing the top platform, the notches are where the ladder seats. Face them the same direction as the tab in note #1.
3. Before gluing the end caps on, remove the can tab. I use hot glue for joining wood to aluminum. If you want the hatch to open, follow the below sequence:



- I. Pop out middle circle.
- II. Fit the middle circle back in, and add tiny dot of glue.
- III. Add hatch door, lining up hinge holes. Add glue for hinges.
- IV. Glue hinges only to hatch door, not to back circle.

Thanks for your purchase from Promethium Forge.
May it ever block your enemy's line of sight, and not yours. Check back often for new releases.